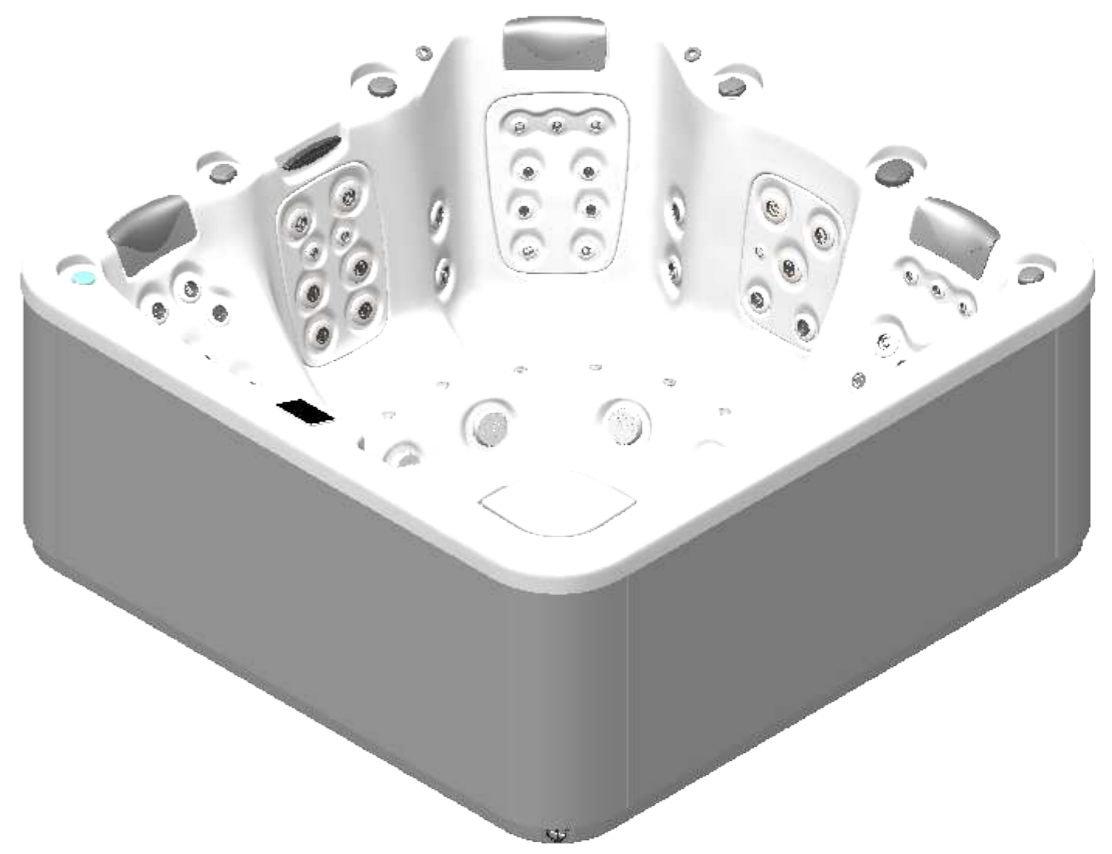
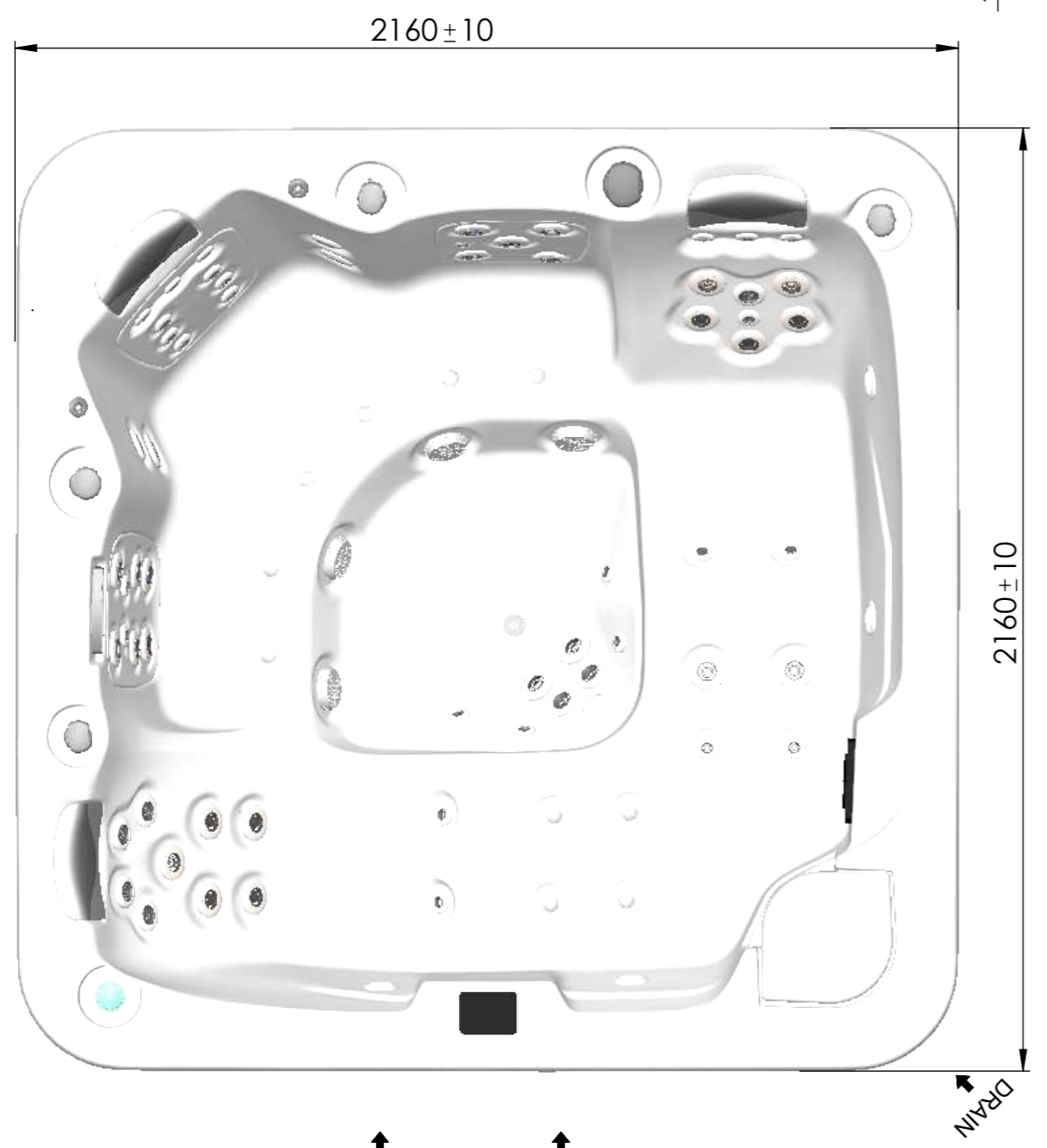
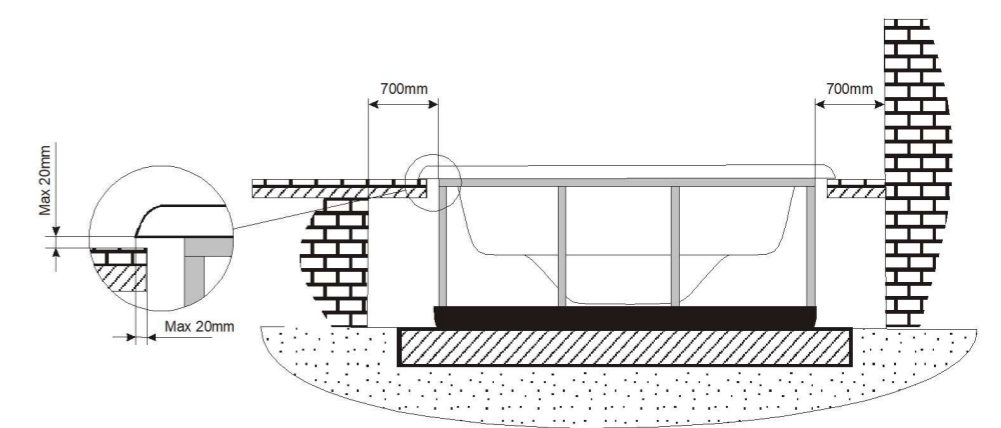


General specifications	
Spa weight (dry)	330 kg
Spa weight (filled)	1230 kg



**WARNING:**  
It's essential to keep a minimum clearance access of **700mm** all around.



According to our policy of continuous improvement, dimensions, features or components of this product can be partially or completely changed without prior notice. It's Customer responsibility to verify that this is the last version of the drawing

01	19/11/2019	IRICA	Drain position modified
Change No.	Date	Name	Modification
Remarks			COMMERCIAL
Dimensions in mm. General Tolerances +/- 10mm			
Drawn	19/11/2019	I.RICA	
Checked	19/11/2019	V.Saiz	
Scale 1:15	General Tolerance		70515
Sheet 1/2	DIN 7168 ISO 2768g		
			Rev. 01
			First Angle Projection